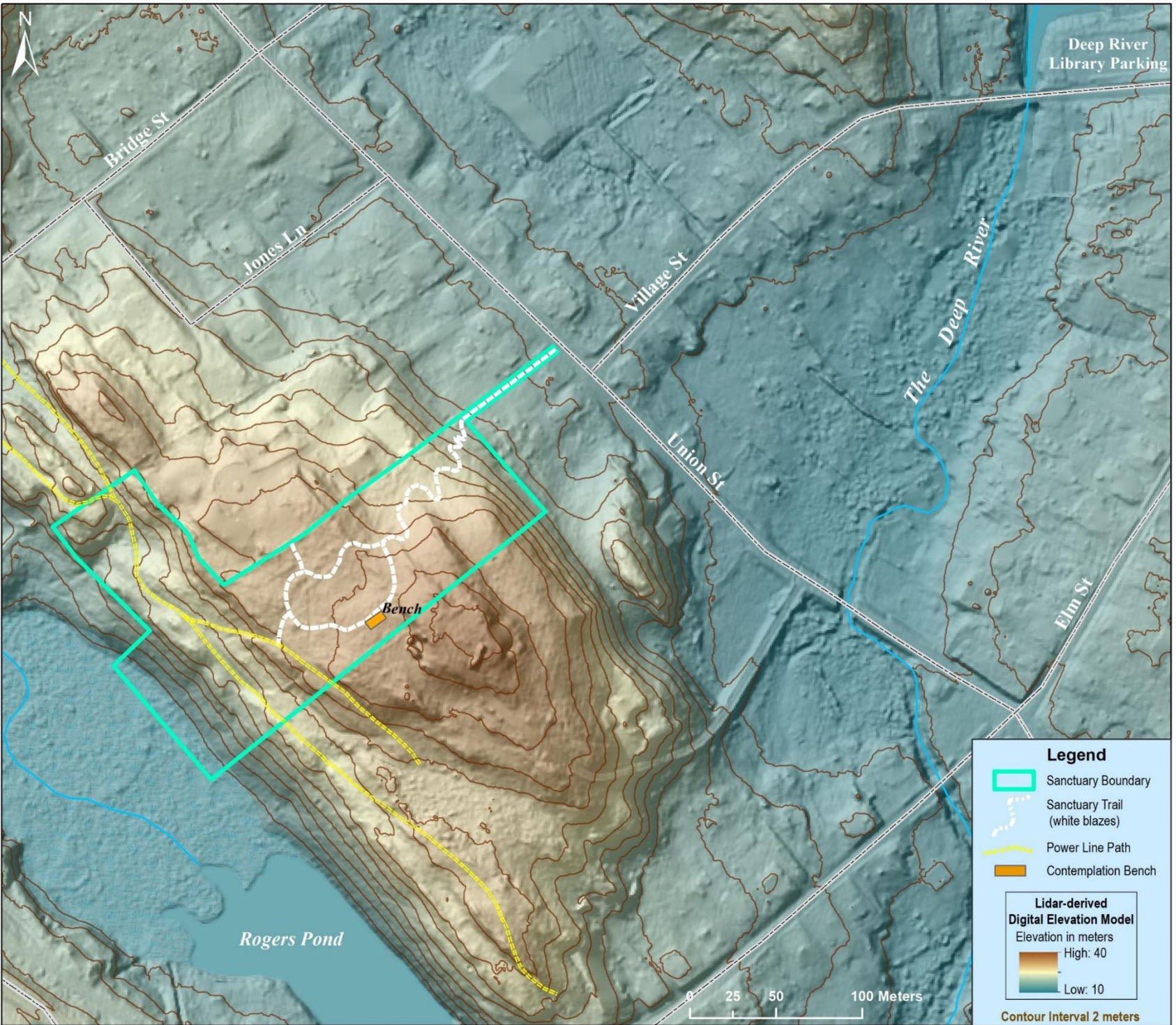


Welcome to Union Street Sanctuary



Union Street Sanctuary is a 6-acre, mostly wooded parcel of land donated to the Deep River Land Trust in 2015 by Margaret P. Eagan. The Sanctuary is accessed via a native-shrub-lined pathway adjacent to house number 109 on Union Street. A trail marked by white blazes has been constructed through the wooded area, and there is a trailside wooden bench at the top of the hill for anyone who wants to sit a while and contemplate the peaceful surroundings. This is a quiet spot to go for a short hike and perhaps enjoy your lunch.



Low rock ridges of Hebron Fm. schist and gneiss (lapetus oceanic terrane) trend NW-SE across the property. Look closely at the rock outcroppings and you can find "boudinage" a geologic occurrence where quartz veins have been stretched during metamorphism to form string-of-sausage shaped layers-- (boudin is the French word for sausage).

The Sanctuary boundary extends to the edge of wetlands adjacent to Rogers Pond. A CL&P Power Company right of way also crosses the property. This Sanctuary is located within the village of Deep River and is easily reached from Main Street. Parking is available at the Deep River Library on the corner of Village and Main Streets just a quarter mile from the trail entrance on Union Street.

Visit our website:
deepriverlandtrust.org
 Find us on Facebook: **Deep River Land Trust, Inc.**

